



~ *First Sunday in Lent* ~

WILL THE REAL JESUS PLEASE  
STAND UP?



Through March 25  
Sunday Mornings  
9:30 am-10:15 am

When is the last time you stepped up to the counter and ordered one medium-size Jesus, extra generous, and heavy on

the bling? Or maybe you like your Jesus supersized! No? Perhaps you prefer yours extra small, and hold the onion, please.

Here is the same question: When's the last time you took a hammer and a chisel to the Jesus of the Bible and formed Him into your own personal Jesus?

*Will the Real Jesus Please Stand Up?* not only reminds us who the real Jesus of the Bible is, but it also reveals to us twelve false christs who are embraced, loved, promoted, and revered—even by well-meaning Christians.



Lunch Bunch Cancelled

The February 21<sup>st</sup> Lunch Bunch has been cancelled. 11 am Bible study and noon Lunch Bunch will resume March 7.

## Sunday School SCHEDULE

- 9:15 am Music Preschool B—4<sup>th</sup> Grade  
5<sup>th</sup>-8<sup>th</sup> Grade Sunday School
- 9:30 am Sunday School Preschool A-4<sup>th</sup> Grade
- 10:00 am Music 5<sup>th</sup>-8<sup>th</sup> Grades
- 10:15 am Sunday School/Music Ends

February 18—*Peter and Cornelius* Acts 10

In church, we receive the Good News that, although we are judged unrighteous and deserving of death, God mercifully declares us holy, righteous, and innocent because of Christ and His work.



Room 215—**Toddlin' Classroom**

Changing table, rocking chair, and extra toys have been moved to the Toddlin' room to allow asbestos removal in the nursery area. Please feel free to use this area as a nursery during services.

WEDNESDAY LENTEN SERVICES 1:00 pm & 6:10pm  
Lenten Meal 5:10 pm



The LWML will hold their 23<sup>rd</sup> Tasting Bee on Saturday, April 7, 2018. This year's theme for the Tasting Bee is: "Music and Memories". We all have our own favorite music or songs from church, our school days (Grade/Jr. High/High School/College), our team's fight song, music to relax us, etc.--for so many of us, music is the soundtrack to our lives, and so many memories come flooding back every time we hear that special music.

Please consider attending the Tasting Bee for "just a taste" of what all the good cooks in our church bring. Also--please consider decorating a table, bringing a dish and recipe to share, or helping in the kitchen. There will be tables set up in the Narthex beginning February 4<sup>th</sup> to sign up if you would like to decorate a table, bring a dish/recipe to share, or help in the kitchen. Thanks to everyone who has contributed and attended in the past. It is a fun day with so many amazing tables and the BEST food ever!!

**Send your recipe to Sandy at [packratsandy@yahoo.com](mailto:packratsandy@yahoo.com)**



NEED ENVELOPES?

Closet cleaning and organizing continues at Our Redeemer. There are many supplies and envelopes for making cards. If you have a project that can use these supplies, please see Marilyn Kempnich or Vicar. We have a good stock pile in the Christ Cares storage.

## BAPTISM THIS WEEK



**ONE LORD  
ONE FAITH  
ONE BAPTISM**

**Blanca Jasmin Ghabel-Lopez**  
*Sunday, February 18, 2018*  
*10:30 am*

**Parents**

Enrique Abarca Lopez  
Elizabeth Hope Atisa Ghabel

**Sponsors**

Charma Wenck  
Sarah Salamati

### Temporary Locations

- ⇒ Crisis Center box is outside the office
- ⇒ Copies of bulletins, **Reflections**, and **Beacon** are on the wire literature rack outside the office.
- ⇒ Coffee and treats in the fellowship hall

Compeer Sound of 

Friendship Concert

Concert Sponsorship Information

Concert Details

Saturday, February 24, 2018 - 7:30 P.M. Doors open at 7:00 PM  
Our Redeemer Lutheran Church - 2301 E. Court Street- Iowa City

Performances by:

**Al Zimmerman:** Talented local pianist delighting audiences with melodic stylization. *Pre-concert at 7 P.M.*

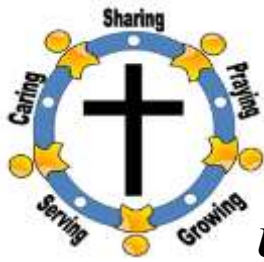
**Kol Shira:** Performing a rich diversity of international music, bringing warmth, harmony and soul.

**Intersection:** The University of Iowa men's student A Capella group singing pop culture hits with some throwbacks to earlier eras.

**HomeBrewed (Lite):** A local group of musicians who focus on rockabilly and music that influenced the evolution of rock and roll.

The mission of the Compeer Program is to reduce the loneliness and isolation of adults living with mental illness by creating supported friendships with trained community volunteers.

*Make a friend.  
Change a life.*



**Small Group Ministry Mission Statement:** *To grow in grace using our spiritual gifts, through good stewardship for the benefit of the group so that the body of Christ may be built up.*

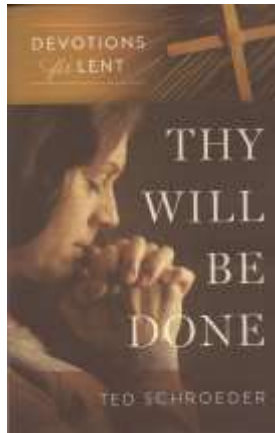
**Upcoming Event for Small Group Ministry ...**

**THY WILL BE DONE**

**Church-wide Small Group Bible Study during the Lenten season.**

February 21, 28; March 7;  
April 4-18  
(6 sessions)

Small groups are encouraged to meet during Lent and participate in this study which will follow the weekly Lent sermons. The Adult Midweek small group will also participate in this study on Wednesday nights from 7:00 pm – 8:00 pm on the following Wednesdays:



**LENTEN SCHEDULE**

Wednesdays - February 21 to March 14  
**Services 1:00 & 6:10 pm**  
**Midweek Meal 5:10 pm**  
**Midweek Class 7:00 pm (No Class March 14)**  
**Choir Rehearsal 7:00 pm**

March 21  
**Services 1:00 & 6:10 pm**  
**Midweek Meal 5:10 pm**  
**Midweek Class 7:00 pm**  
**Spiritual Growth Event 7:00 pm**



March 25 PALM SUNDAY  
**Confirmation at 10:30 am**

March 28 SILENT WEDNESDAY  
**Prayer Walk 11:00 am - 8:00 pm**

March 29 MAUNDY THURSDAY  
**Services 1:00 & 7:00 pm**

March 30 GOOD FRIDAY  
**Kiwanis Prayer Breakfast 6:30 am**  
**Services 1:00 & 7:00 pm**

March 31  
**Easter Worship 5:30 pm**

April 1 EASTER  
**Easter Worship 8:00 & 10:30 am**  
**Easter Breakfast 9:00 am**  
**Easter Egg Hunt 10:00 am**



The construction area is a hard hat only zone! Please heed the warning signs and do not disturb the contained areas.

PASTOR HARTWIG AND VICAR SCHEELE WILL BE AT BEST PRACTICES February 20 - 24



## 2018-2019 School Year Enrollment

To register for the 2018-19 school year, please fill out our registration form and submit it to our office with the registration fee.



## PB&J for Crisis Center



### Donate here!

We're collecting peanut butter and jelly donations this month as part of The Crisis Center's "Spread the Love" campaign. Thanks for helping us help others.



There are 19,500 food insecure people in Johnson County. Be apart of Table to Table's volunteer team that delivers 45,000 lbs of food each week to agencies that serve the hungry, homeless, and at-risk populations of Johnson County. We are looking for community members that have 2-3 hours a week and can help us rescue food! To learn more contact us at 319-337-3400 or [volunteer@table2table.org](mailto:volunteer@table2table.org).

LWML with Scott Kibby

February 19  
7:00 pm  
Room 208/210



**Lutheran  
Women  
in Mission**

All ladies are invited to the February 19

LWML meeting at 7 pm. Our guest speaker will be Our Redeemer member Scott Kibby, principal at the new Liberty High School. He'll share what went into opening a new high school (only the second new high school in the state of Iowa in the past 25 years!) and how high schools are mission fields. Join us!

Marilyn Albright, Beth Hargens, and Marlyce Hollis, hostesses  
Carol Schuldt, devotions

## EASTER FLOWER SALE

Our Redeemer needs someone to price Easter flowers, sign up people to purchase flowers, and arrange flowers in the sanctuary. Cynthia Freundt will provide information and assistance. Contact her at 338-5546 or [dcfreundt@msn.com](mailto:dcfreundt@msn.com).



# Preschool Newsletter

February 12-16, 2018



Director/Teacher, Kaja Mueller      Assistants, Sheena White M/W/F, Sara Cross T/TH  
Preschool Phone: 319-338-3949      www.ourredeemerpreschoolic.org      preschool@ourredeemer.org

## Parent Teacher Conferences

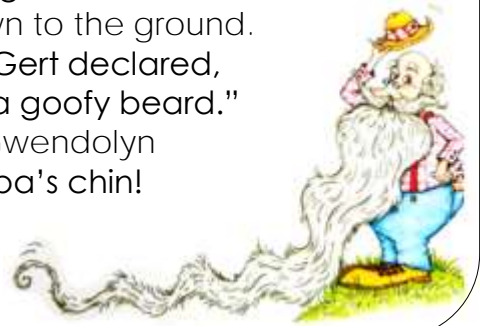
Wednesday, February 28<sup>th</sup>—No Class  
Sign up in the hallway

Happy birthday to **ESTHER!** She turned five on 2-16-2018! May God continue to bless her in this next special year of life!



**Gg** (To Ta Ra Boom De Ay)

Gert's Grandpa Gregory grew whiskers past his knee. They grew around and 'round. They grew down to the ground. "Good golly," Gert declared, "Gramp's got a goofy beard." So Grandma Gwendolyn shaved Grandpa's chin!



## This Week

### CIRCLE TIME

Numbers  
Shapes  
Tally counting  
Sight Words: UP, DOWN, OFF, ON  
Valentine Mat Man  
Calendar

### READING CENTER

Valentines  
Love  
Helping  
Manners

### CRAFT TIME

Parents' gift  
Tissue paper die hearts

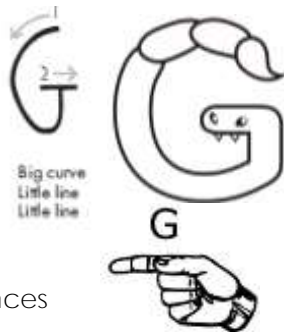
### TEACHER TIME

Letter Gg  
Assessments for conferences

### JESUS TIME

A lawyer asked Jesus an important question, "What must I do to inherit eternal life?" Jesus told him the story of the good Samaritan (Luke 10:25-37). A man was walking from Jerusalem to Jericho when he was robbed and hurt. Three people walked by the hurt man, but only one stopped to help him. Jesus showed what selfless love looks like.

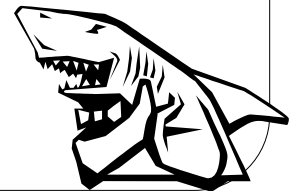
*Thanks for a  
great Valentines  
everyone!!!!*



## Shark Prayer

*(spoken with holding fin on head)*

God is great,  
God is good,  
Let us thank Him  
For our food! Amen.



## STORAGE TOTES FOR PRESCHOOL

Kaja is trying to organize Preschool storage in a smaller storage space since the renovation. If you have a plastic tub or two that you could send her way, it would be very helpful. See Kaja Mueller, call 319-338-3949 or email preschool@ourredeemer.org.



PANCAKE DAY

It's that time of year again. Time to get ready for Our Redeemer's annual Pancake Day.



This year, on Saturday March 3rd, we will again be supporting the Crisis Center with the proceeds from this event.

In your communication box, in the narthex, there is a Pancake Day flier and a ticket booklet with more information. There are also volunteer sign-up sheets in the church office. Volunteers will be needed for set up, serving and clean up. Please consider donating a few hours of your time to help with this event.

Mission Committee Members

Denise Holida  
 Anita Nicholson  
 Val Penney  
 Robert Powers (Chairman)  
 Joe Robinson



**Building Healthy Families:** At the end of the Revolutionary War, in his letter to the States on June 8, 1783, George Washington is quoted as saying: "...the characteristics of the Divine Author of our blessed Religion, and without a humble imitation of whose example in these things, we can never hope to be a happy Nation." As you celebrate President's Day tomorrow, pray and thank God for the gifts of liberty and freedom, and for those who currently hold national, state and local positions of leadership in government.

**Lutheran Family Service**  
 Learn more at [LFSiowa.org](http://LFSiowa.org)



The Orphan Grain Train will also be holding their annual Bake Sale during the Pancake Day fundraiser. The Orphan Grain Train provides physical relief for domestic and international disasters. Please consider donating baked goods to support this Lutheran outreach to those in need. Donated items can be dropped off in the Fellowship Hall on Friday, March 2<sup>nd</sup> or early Saturday morning. If you prefer, you may price your donation. Thank you!

Walt & Bev Prem



Calling All New Members

Join the hosting Assimilation Committee for brunch, fellowship, and to learn about Our Redeemer ministry opportunities.

**When:** Sunday, February 25, following the 10:30 worship service

**Where:** Church Fellowship Hall

**Who is a new member? If you have joined Our Redeemer in the last year and have not yet been able to attend a new member brunch, you're invited.** RSVP to the church office, 319-338-5626 or Cory Strumpel 319-627-4322.



Lenten Meals Start  
 Wednesday, February 21  
 5:10pm



# Youth Happenings

Wednesday

5:10 pm Lenten Meal  
6:10 pm Lenten Worship Service  
7:00 pm Confirmation & Midweek Classes

Starting  
February 21<sup>st</sup>

Confirmation Classes  
(6<sup>th</sup>—8<sup>th</sup> Grades)

High School

Wednesday, February 21 at 7:00 pm

## 6<sup>th</sup> Grade—Lecture

Unit 3: God's Grace through Jesus

The Gospels:

Matthew

Mark

Luke

John



**Memory Work:** Matthew 28:18-20

## 7<sup>th</sup> Grade—Lecture



The Lord's Prayer

Review for the exam next week

**EXAM:** Wednesday, February 28

## 8<sup>th</sup> Grade—Small Group

The Lord's Supper

Benefits of

Communion

**CONFIRMATION**

**PAPER & ALL SERMON**

**SUMMARIES DUE:** Wednesday, February 28



All Confirmation  
Parent Meeting

Wednesday, February 28  
8:00 pm  
Fellowship Hall

## High School Midweek

Wednesdays

at 6:45 pm

*starting February 21*

Youth Room



## Thy Will Be Done series

*These devotions reflect on the idea of **seeking God's will** in **all** aspects of our lives, especially during Lent, in terms of our **identity**, our **dreams** for the future, our **worldview** and our **response** to **Christ the Crucified**.*

## Make a note...

**The February 28<sup>th</sup> LENTEN MEAL will be hosted by the High School Youth Families.**

We need all high school students and their families to help serve and clean up on February 28<sup>th</sup>.

**Students**, if you can come after school to help prepare the meal, let Kara know.

## OUR REDEEMER OFFICE DIRECTORY

Office: 338-5626      Fax: 338-9171      Website: <http://www.ourredeemer.org>      Preschool: 338-3949  
 Prayer Chain: 351-5297 or [prayerchain@ourredeemer.org](mailto:prayerchain@ourredeemer.org)      Special Announcements Line: 338-3505

<u>STAFF &amp; EMAIL</u>	<u>PHONE NO.</u>	<u>STAFF &amp; EMAIL</u>	<u>PHONE NO.</u>
Brent Hartwig, Senior Pastor <a href="mailto:bhartwig@ourredeemer.org">bhartwig@ourredeemer.org</a>	338-5626 (church) 337-2403 (home)	Kaja Mueller, Preschool Director <a href="mailto:preschool@ourredeemer.org">preschool@ourredeemer.org</a>	338-3949 (preschool) 338-5626 (church)
Luke Scheele, Vicar <a href="mailto:vicar@ourredeemer.org">vicar@ourredeemer.org</a>	338-5626 (church)	Sara Cross, Preschool Assistant <a href="mailto:preschoolassistant@ourredeemer.org">preschoolassistant@ourredeemer.org</a>	338-3949 (preschool)
Sarah Gabel, Bookkeeper <a href="mailto:bookkeeper@ourredeemer.org">bookkeeper@ourredeemer.org</a>	338-5626 (church)	Kara Hartwig, Youth Coordinator <a href="mailto:youthcoordinator@ourredeemer.org">youthcoordinator@ourredeemer.org</a>	338-5626 (church)
Denise Holida Director of Small Group Ministry <a href="mailto:smallgroups@ourredeemer.org">smallgroups@ourredeemer.org</a>	338-5626 (church) 930-0165 (cell)	Louise Klopp, Director of Choirs <a href="mailto:choirdirector@ourredeemer.org">choirdirector@ourredeemer.org</a>	338-5626 (church)
Marilyn Paetz, Organist <a href="mailto:organist@ourredeemer.org">organist@ourredeemer.org</a>	351-4262 (home)	Marnie Schrader, Children's Ministry <a href="mailto:childrensministry@ourredeemer.org">childrensministry@ourredeemer.org</a>	319-530-1563 (cell)
Kevin Sellers Director of Technology <a href="mailto:technology@ourredeemer.org">technology@ourredeemer.org</a>	338-5626 (church) 631-8924 (cell)	Laurel Sellers, Office Coordinator <a href="mailto:redemer@ourredeemer.org">redemer@ourredeemer.org</a>	338-5626 (church)
Sheena White, Preschool Assistant <a href="mailto:preschoolassistant@ourredeemer.org">preschoolassistant@ourredeemer.org</a>	338-3949 (preschool)		

### 2018 Board of Elders

Bill Benson	517-881-9848
Vaughn Davisson	319-648-4660
Jim Eick	338-1293
Skip Kempnich	351-5297
Eric Kooker	339-0175
Val Penney	354-1453
Denny Schrader	461-7318
Arlan Thompson (Chair)	338-2938
Marty Wenck	330-2761

### 2018 Board of Directors

President	Alan Meyer	319-461-1748
Vice President	Myrl Holida	319-351-4301
Secretary	Jennifer Kooker	319-339-0175
Treasurer	Larry Freeman	319-400-8356
Board of Elders	Arlan Thompson	319-338-2938
Properties	Dave Johnson	319-333-9606
At Large	Jeff Kucera	563-316-1088
	Barb Schanbacher	319-351-3998
	Kevin Roiseland	319-230-5247

### DEADLINES

**Reflections** (printed weekly): Information must be submitted (written, typed, emailed or faxed) each Wednesday by 5:00 pm

**Beacon Newsletter & Church Activities Calendar** (printed monthly): Information must be submitted (written, typed, emailed or faxed) by noon on the 20<sup>th</sup> of each month.

### TELEVISION ~ RADIO

**Our Redeemer Worship Service on Public Access TV Channel 18** every Wednesday at 4:00 pm.

**The Lutheran Hour Television Ministries talk show "On Main Street"** is shown on **Public Access Television Channel 18** on Thursdays at 1:30 pm and Sundays at 10:00 pm.

**Lutheran Hour Ministries on Radio**—**WMT 600 AM Radio** on Sunday mornings at 6:30 am, and **KXEL 1540 AM Radio** on Sunday mornings at 9:30 am. For more information on Lutheran Hour Ministries go to [www.LHM.org](http://www.LHM.org).

### VOLUNTEER BACKGROUND SCREENING

Our Redeemer Lutheran Church has been in ministry with children and youth for almost 55 years. Our insurance carrier, Church Mutual, strongly encourages us to promote the safest and most secure environment possible by screening all employees and volunteers, both new and existing, especially those who interact with children. Performing background checks will provide safeguards and peace of mind to our staff, volunteers, parents, youth and children. Additional details will be forthcoming as we put this screening process in motion.